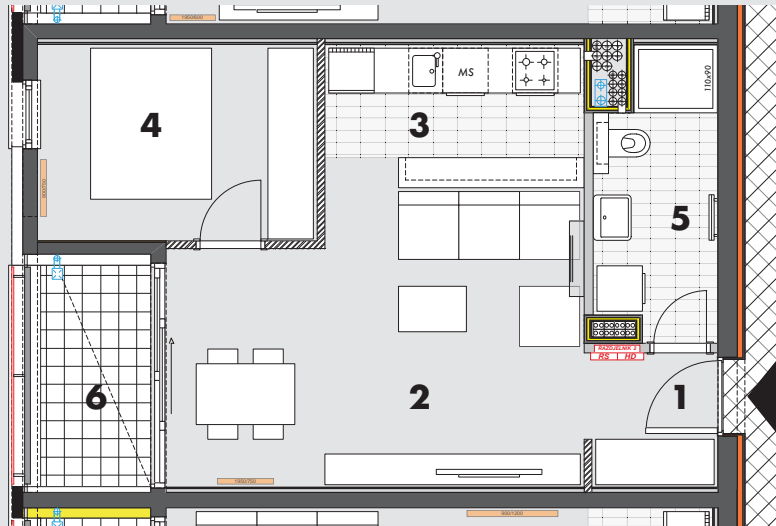
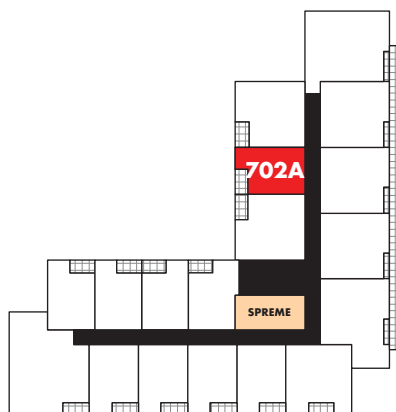


0 1 2 3 4 5
M 1:100



S 702A 2.0S



7. kat

1	ulaz		3,09	m ²
2	boravak i blagovanje		20,91	m ²
3	kuhinja		5,82	m ²
4	soba1		9,62	m ²
5	kupaonica		5,80	m ²
	ukupno		45,24	m²
6	loggia	0,75 x 4,28 m ² =	3,21	m ²
	sveukupno		48,45	m²